

SERVICES SOLUTIONS FOR MICRO-ELECTRONIC BACK END ASSEMBLY

SERMA
HCM.SYSTREL



- Die processing: storage (wafers and die), sawing, visual inspection •
 - Micro-Electronics Assembly: hermetic component, SCM, MCM •
 - Hybrids: MCM, COB, CMS, macro-modules •
 - Ceramic substrates, Thick layer substrates •
- CCGA: Copper reinforced column manufacturing and assembly (ESA validated process) •

HCM.SYSTREL'S OFFER

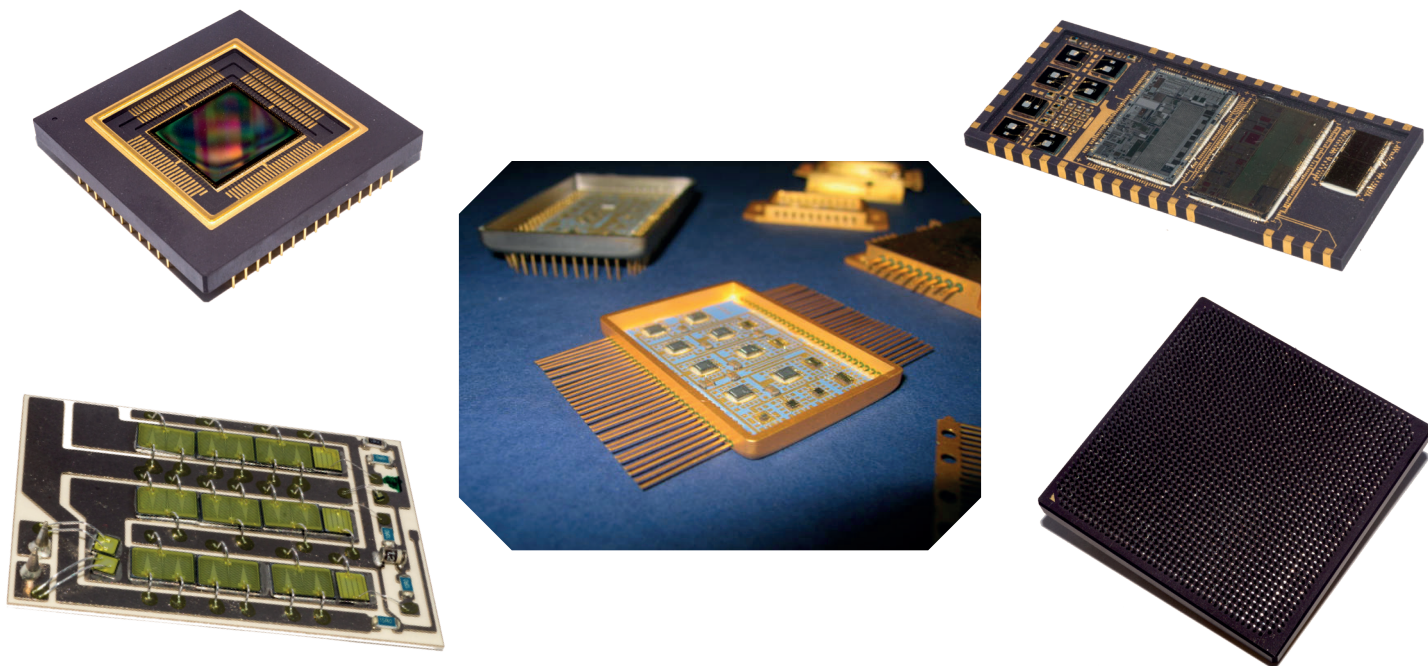
HCM.SYSTREL manufactures **HiRel components and Hybrid modules**, using mastered processes and based on CUSTOMER scope of work.

Our market:

50 %
Aeronautics, Space,
Defense, Nuclear

50 %
Industrial (Energy, Implanted
Devices, Telecom, Design center, ...)

We support you in your upstream phase (co-design, prime technical choice, CAD services, ...) and provide global services: substrate manufacturing, procurement management, sawing, wafer storage, die visual inspection, assembly and final test (screening including electrical test and lot qualification).



HCM.SYSTREL'S ADDED VALUE

We have in house production, environmental (mechanical, thermal) and electrical test means ensuring high reliability component production, from wafer to tested and qualified components.

Realizations:

- ▶ Hermetic component (-200°/+200°)
- ▶ Hybrids and macro-modules
- ▶ Space grade component (metal et ceramic)
- ▶ Columned LGA (up to 1752 pins)
- ▶ Specific component: optoelectronic, power module, MEMS, RF, ...
- ▶ Printed ceramic substrates (Thick film)



DIE STORAGE

HCM.SYSTREL offers a fireproof secured solution for long term die and wafer storage in dry cabinet (nitrogen flow, temperature and humidity controlled, ...).

Moreover, HCM.SYSTREL provides various associated services such as incoming control, document verification, lot qualification, shipping, stock management, ...

PRODUCTION LINE

HCM.SYSTREL has an automatic production line for thick film substrates in Les Ulis and multiple assembly lines for micro-electronics including SMT technology in La Rochelle.

Those lines allow us to handle mixed assemblies (Die / SMT) and provide tested hybrids or macro-modules.

MARKET

Our core target: markets where reliability, robustness, denseness resistance to harsh environment (high and low temperatures) are mandatory.



SALES CONTACT Jean GUILBAUD | +33 (0)6 08 77 10 22 | j.guilbaud@serma.com

TECHNICAL CONTACT Patrick BARBOT | +33 (0)6 08 47 53 56 | p.barbot@serma.com

www.serma.com



SERMA GROUP – For Excellence In Electronics



MULTI SECTOR



ELECTRONICS
TECHNOLOGIES

ENERGY

MICROELECTRONICS

EMBEDDED SYSTEMS

ENGINEERING

SAFETY & CYBERSECURITY
OF SYSTEMS

LOCATIONS
(plants and offices)



SERMA
TECHNOLOGIES

SERMA
INGENIERIE

SERMA
SAFETY & SECURITY

SERMA
ENERGY

SERMA
ID MOS

SERMA
HCM.SYSTREL

SERMA
PRODUCTIVITY ENGINEERING

SERMA
INTERNATIONAL